



Installation manual QicsTime

Table of Contents

1. Introduction	1
1.1 Purpose of this document	1
1.2 System requirements	1
2. Contents installation CD	2
2.1 Documentation	2
2.2 Installations	2
3. QicsTime Management	3
3.1 General	3
3.2 Prerequisites	3
3.3 Installation	3
4. QicsTime Web	6
4.1 General	6
4.2 Prerequisites and IIS Settings	6
4.3 Installation	7
4.4 Internet Information Service (IIS) check	9
5. QicsTime Mobile	11
5.1 General	11
5.2 Prerequisites and IIS Settings	11
5.3 Installation	11
5.4 Internet Information Service (IIS) check	13
6. Exact Custom Solutions	14
6.1 General	14
6.2 Scenario 1- Exact Globe (Standalone)	14
6.3 Scenario 2- Exact Synergy (Standalone)	15
6.4 Scenario 3- Consolidated	17
6.5 Scenario 4- Integrated	19
6.6 Scenario 5- Synergy Enterprise	21
6.7 SDK Add On on one or more specific databases	23
7. QicsTime Database	24
7.1 New	24
7.2 Update	24

1. Introduction





1.1 Purpose of this document

This document supplies step-by-step instructions which should be followed for a successful installation of QicsTime. Depending on the environment on which the software is to be installed, the installation can have minor differences with the installation described in this manual.

The instructions have been written in such a way that experienced system administrators can execute the setup without Qics' help. Of course, the QicsTime support department can be contacted if needed. (071 750 15 32)

1.2 System requirements

To get the best performance of QicsTime the required minimum specifications are:

Part	Desired requirements	Minimum specificities
 Webservice	<ul style="list-style-type: none"> ▪ Windows 2012 ▪ IIS 8.0 ▪ 200 Mb free disk space ▪ .NET Framework 4.5.2 ▪ 2 Gb free RAM 	<ul style="list-style-type: none"> ▪ Windows 2008 R2 ▪ IIS 7.0 ▪ 200 Mb free disk space ▪ .NET Framework 4.5.2 ▪ 2 Gb free RAM
 SQL Server	<ul style="list-style-type: none"> ▪ MS SQL 2012 ▪ 1Gb free disk space ▪ Dual (or more) Processor ▪ 4 Gb RAM ▪ Mixed Mode Authentication 	<ul style="list-style-type: none"> ▪ MS SQL 2005 ▪ 250 Mb free disk space ▪ Single Processor ▪ 2 Gb RAM ▪ Mixed Mode Authentication
 QicsTime Web Clients	<ul style="list-style-type: none"> ▪ Windows 8.1 ▪ Internet Explorer 11 	<ul style="list-style-type: none"> ▪ Windows 7 ▪ Internet Explorer 10
 QicsTime Management Console	<ul style="list-style-type: none"> ▪ Windows 8.1 ▪ 200 Mb free disk space ▪ .NET Framework 4.5.2 ▪ 4 Gb RAM 	<ul style="list-style-type: none"> ▪ Windows 7 ▪ 200 Mb free disk space ▪ .NET Framework 4.5.2 ▪ 1Gb RAM

- Linked servers are not supported. This means that QicsTime database should be on the same instance as Exact databases.

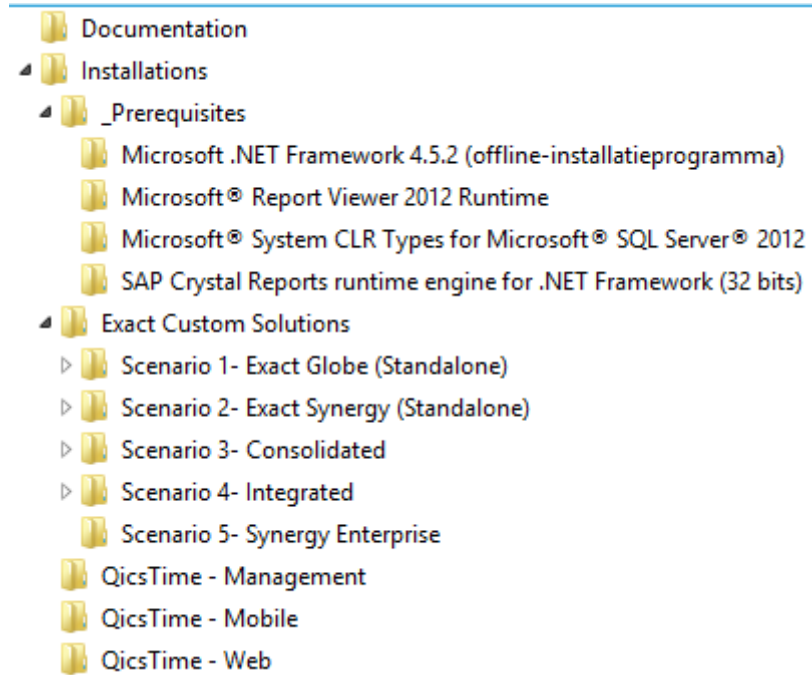
2. Contents installation CD

2.1 Documentation

The CD contains a directory "Documentation". You will find the installation manual here.

2.2 Installations

The CD contains a directory "Installations". The contents of this directory is shown in the following image.



3. QicsTime Management

3.1 General

QicsTime Management is the BackOffice application of QicsTime. This software should be installed locally on each work station for each employee in your company who is going to work with QicsTime Management.

If you have installed an older version of QicsTime Management already, remove this installation first by choosing "Add or Remove Programs" from the control panel in the Start Menu.

In order to install the software correctly as described in the paragraph 3.3, it is mandatory that the work stations are logged on to with an administrator account.

3.2 Prerequisites

QicsTime Management depends on the following components

- ⇒ Microsoft .NET Framework 4.5.2 (offline-installatieprogramma)
- ⇒ Microsoft® Report Viewer 2012 Runtime
- ⇒ Microsoft® System CLR Types for Microsoft® SQL Server® 2012
- ⇒ SAP Crystal Reports runtime engine for .NET Framework (32 bits)

The Microsoft components will be downloaded automatically when installing QicsTime Management, but when you don't have an internet connection, you can install them manual.

The Crystal Reports runtime must always be installed manually once for each machine that will run QicsTime Management.

These dependencies are located on the CD at:

"..\Installations_Prerequisites\"

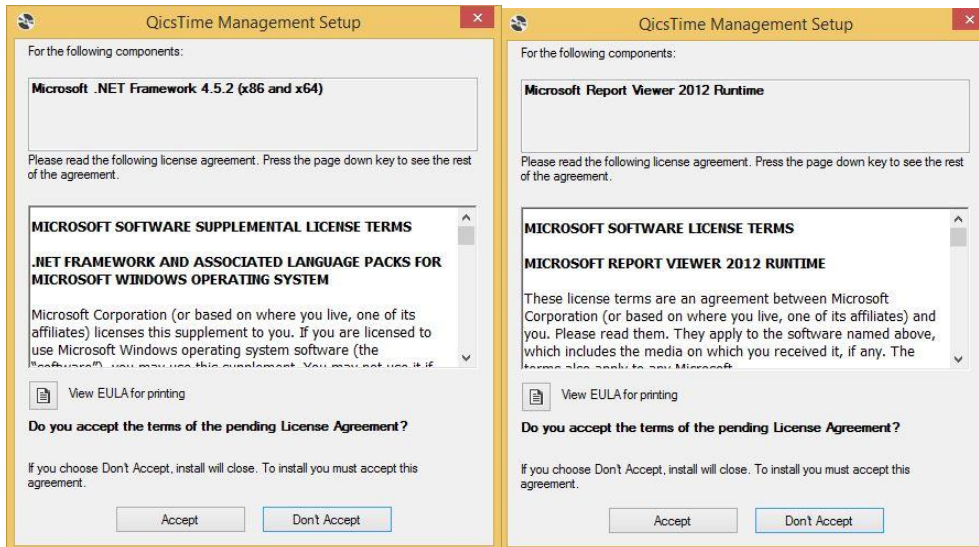
3.3 Installation

Execute this file from CD:

"..\Installations\QicsTime Management\setup.exe"

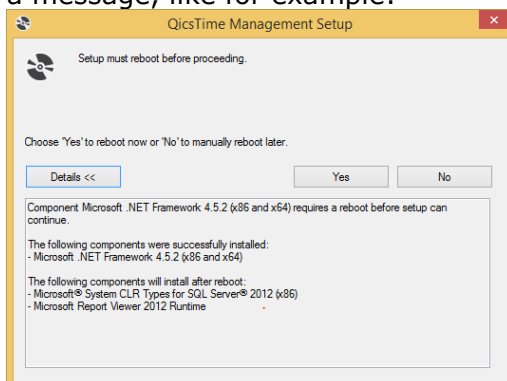
Setup.exe makes sure that next to QicsTime Management, other required software is installed as well, like for instance, the .NET framework and Microsoft Report viewer-component.

The one exception that won't be installed during setup is the SAP Crystal Reports runtime. You can find that installation on "..\Installations\Prerequisites\SAP Crystal Reports runtime engine for .NET Framework (32 bits)"



Depending on whether the software is installed or not, a license agreement is shown (see image). There can be more than one. Only after you have accepted all license agreements, the software is going to be installed.

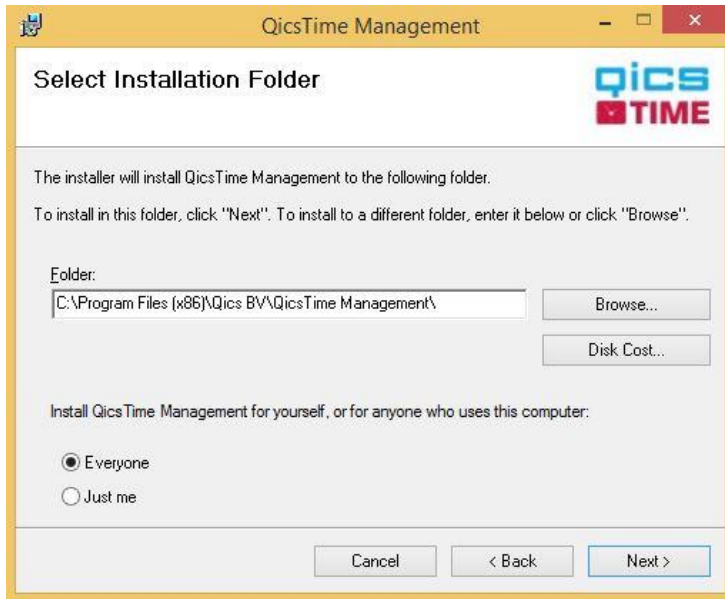
In some cases it will be necessary to reboot the machine, if so you will be prompted with a message, like for example:



After accepting the agreements (if necessary), the installation-wizard is executed. Follow the instructions as shown.

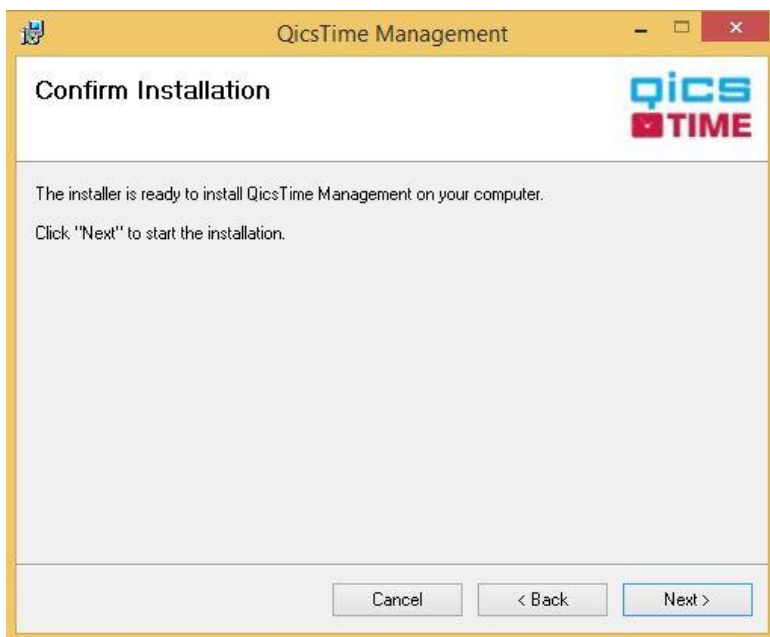


Click the "Next"-button.



Enter the location where you want to install the application to, at "Folder".
"Install QicsTime Management for yourself, or for anyone who uses this computer": Make sure you choose "Everyone". This will avoid problems with reports from "Crystal Reports" generated by QicsTime Management.

Click the "Next"-button.



Click the "Next"-button to start the installation. Once the installation is finished, click the "Close"-button.

4. QicsTime Web

4.1 General

QicsTime Web is the Front Office application of QicsTime. This software has to be installed on the web server.

If you have installed an older version of QicsTime Web already, remove this installation first by choosing "Add or Remove Programs" from the control panel in the Start Menu.

In order to install the software correctly as described in the paragraph 4.3, it is mandatory that the web server is logged on to with an administrator account.

4.2 Prerequisites and IIS Settings

QicsTime Web depends on the following components

- ⇒ Microsoft .NET Framework 4.5.2 (offline-installatieprogramma)
- ⇒ Microsoft® Report Viewer 2012 Runtime
- ⇒ Microsoft® System CLR Types for Microsoft® SQL Server® 2012
- ⇒ SAP Crystal Reports runtime engine for .NET Framework (32 bits)

The Microsoft components will be downloaded automatically when installing QicsTime Web, but when you don't have an internet connection, you can install them manual.

The Crystal Reports runtime must always be installed manually once for each machine that will run QicsTime Management.

These dependencies are located on the CD at:

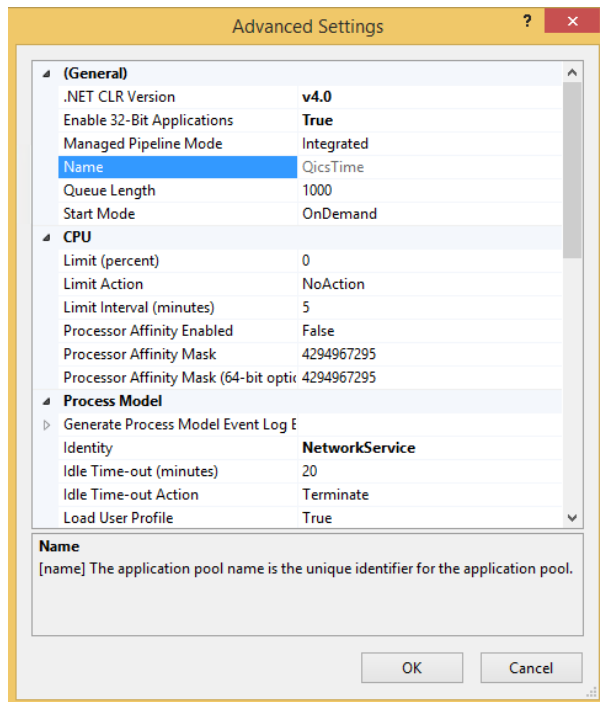
"..\Installations_Prerequisites\"

In order to successfully install the QicsTime Web on the web server, the server must meet at minimum the following installed Server Roles and features.

Role/Service	Status
Web Server	Installed
Common HTTP Features	Installed
Static Content	Installed
Default Document	Installed
Directory Browsing	Installed
HTTP Errors	Installed
HTTP Redirection	Not installed
WebDAV Publishing	Not installed
Application Development	Installed
ASP.NET	Installed
.NET Extensibility	Installed
ASP	Not installed
CGI	Not installed
ISAPI Extensions	Installed
ISAPI Filters	Installed
Server Side Includes	Not installed
Health and Diagnostics	Installed
HTTP Logging	Installed
Logging Tools	Not installed
Request Monitor	Installed
Tracing	Not installed
Custom Logging	Not installed
ODBC Logging	Not installed
Security	Installed
Basic Authentication	Installed
Windows Authentication	Installed
Digest Authentication	Not installed
Client Certificate Mapping Authentication	Not installed
IIS Client Certificate Mapping Authentication	Not installed
URL Authorization	Not installed
Request Filtering	Installed
IP and Domain Restrictions	Not installed
Performance	Installed
Static Content Compression	Installed
Dynamic Content Compression	Not installed
Management Tools	Installed
IIS Management Console	Installed
IIS Management Scripts and Tools	Not installed
Management Service	Not installed
IIS 6 Management Compatibility	Installed
IIS 6 Metabase Compatibility	Installed
IIS 6 WMI Compatibility	Not installed
IIS 6 Scripting Tools	Not installed
IIS 6 Management Console	Installed

If the server is new, you also should install .NET Framework 4.5.2 before you can create Application pools with framework v4.0. You can find the installation on “..\Installations_Prerequisites\”. A reboot is required after installation.

Before installation of QicsTime Web it’s best to create an Application pool on the IIS specially for the website, the configuration must meet the following setting.



Note that for QicsTime Web it is necessary to set “Enable 32-Bit Applications” to “True”

4.3 Installation

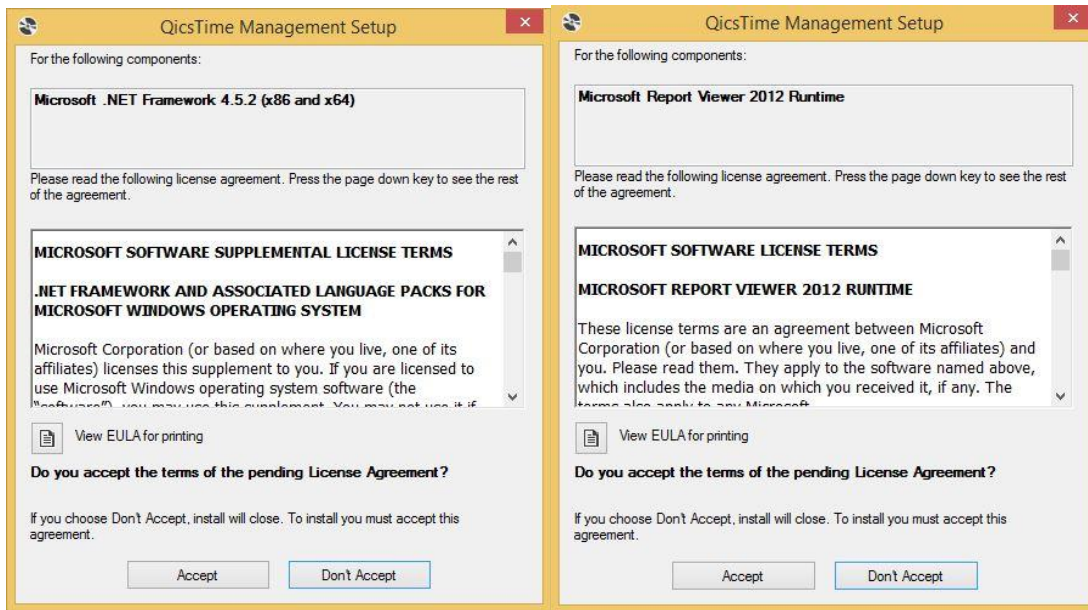
The installation of QicsTime Web should be executed by an administrator, or Execute the Setup file as administrator.

Execute this file from CD:

“..\Installations\QicsTime Web\setup.exe”

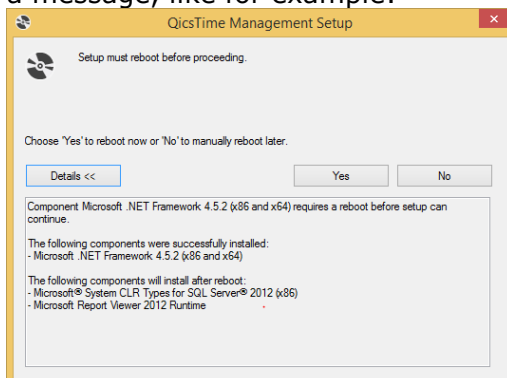
Setup.exe makes sure that next to QicsTime Management, other required software is installed as well, like for instance, the .NET framework and Microsoft Report viewer-component.

The one exception that won’t be installed during setup is the SAP Crystal Reports runtime. You can find that installation on “..\Installations\Prerequisites\SAP Crystal Reports runtime engine for .NET Framework (32 bits)”

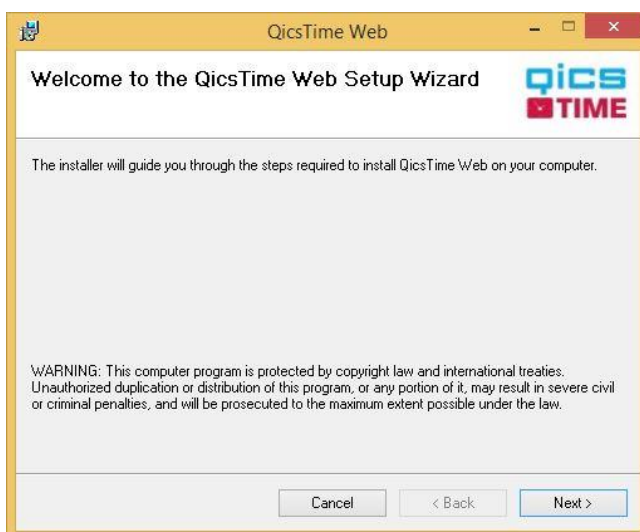


Depending on whether the software is installed or not, a license agreement is shown (see image). There can be more than one. Only after you have accepted all license agreements, the software is going to be installed.

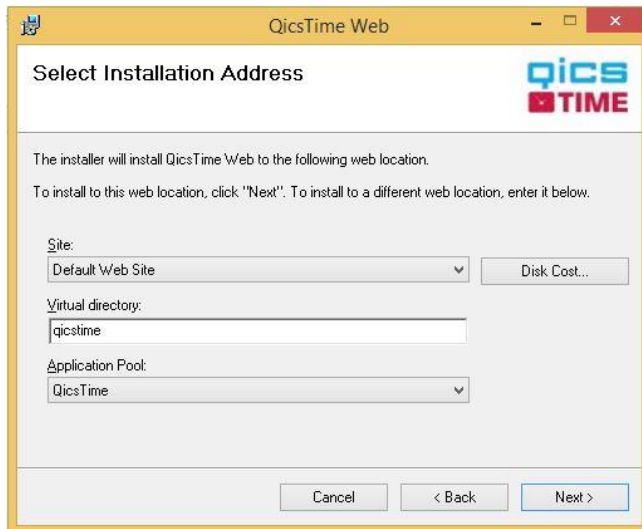
In some cases it will be necessary to reboot the machine, if so you will be prompted with a message, like for example:



After accepting the agreements (if necessary), the installation-wizard is executed. Follow the instructions as shown.

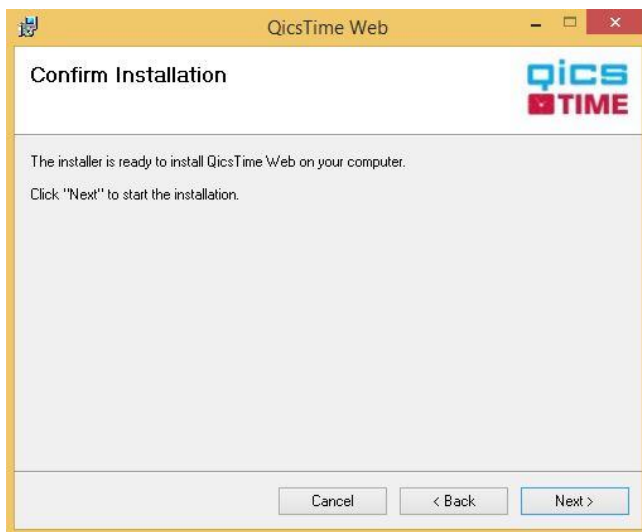


Click the “Next”-button.



Choose the desired Site if you don't want to install under the “Default Web Site”. Enter the desired directory name at “Virtual directory”. Default is “qicstime”. Choose the correct Application pool that you have created in paragraph 4.2. It should be an Application pool running on 32 bits and .Net framework v4.0.

Click the “Next”-button.



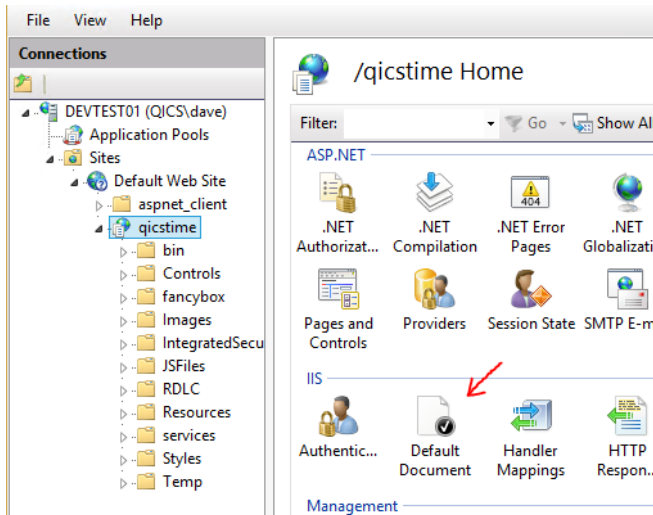
Click the “Next”-button to start the installation. Once the installation is finished, click the “Close”-button.

The next step is to create the “Environments.config” file, by opening the QicsTime Web and fill in the server configuration.

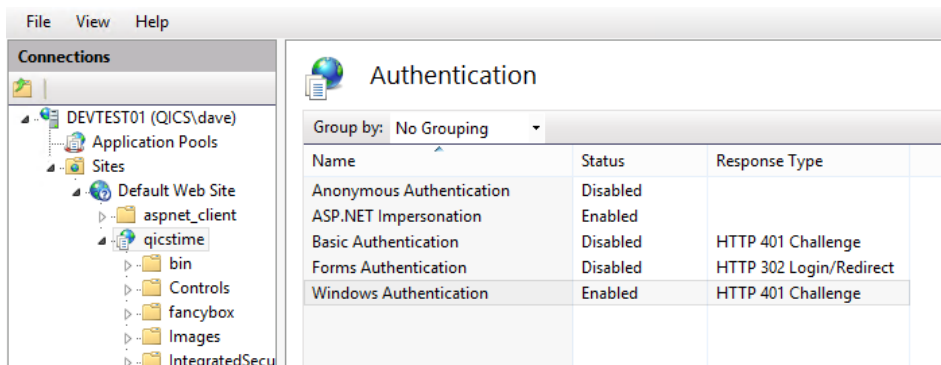
4.4 Internet Information Service (IIS) check

The Virtual Directory of QicsTime that has just been created needs to be checked for a couple of settings.

Make sure “Default Document” on the ‘documents’-tab contains “default.aspx”.

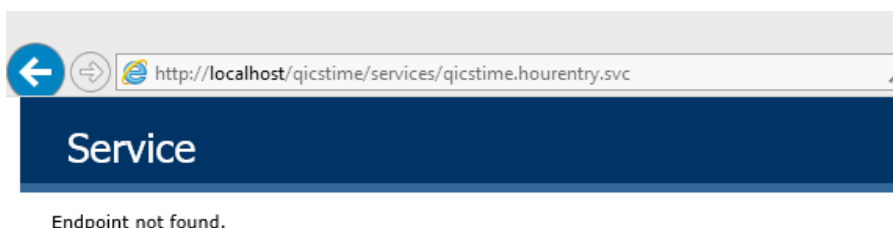


On the QicsTime Web application the "Authentication" section should be configured as shown.



Also make sure that the folder "..\QicsTime\services" accepts anonymous access. The web services and the Mobile application make use of its own authentication and authorization. To check if the QicsTime services are working correctly open the URL: <http://localhost/qicstime/services/qicstime.houentry.svc>

Result should be as shown.



5. QicsTime Mobile

5.1 General

QicsTime Mobile is the Front Office application of QicsTime. Specifically designed for hour / expense entry on a smart phone. This software has to be installed on the web server.

If you have installed an older version of QicsTime Mobile already, remove this installation first by choosing "Add or Remove Programs" from the control panel in the Start Menu.

In order to install the software correctly as described in the next paragraph, it is mandatory that the web server is logged on to with an administrator account.

5.2 Prerequisites and IIS Settings

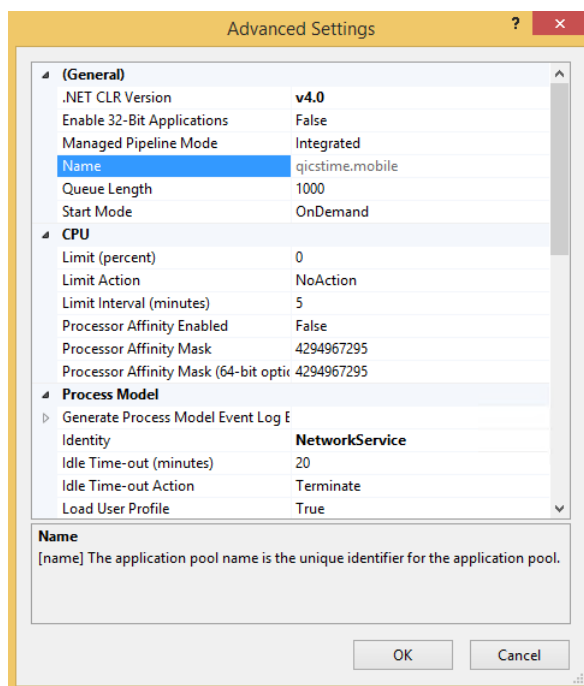
QicsTime Mobile depends on the following components

⇒ Microsoft .NET Framework 4.5.2 (offline-installatieprogramma)

QicsTime Mobile depends on the services of QicsTime Web, so before installing QicsTime Mobile make sure QicsTime Web is installed.

For QicsTime Mobile to work, the server must meet the same installed IIS Features and .Net Framework components as QicsTime Web, see paragraph 4.2.

Before installation of QicsTime Mobile it's best to create an Application pool on the IIS specially for the website, the configuration must meet the following setting.



5.3 Installation

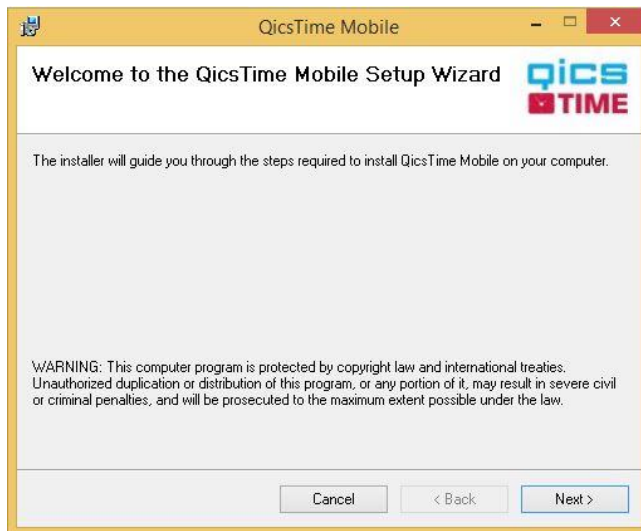
Execute this file from CD:

"..\Installations\QicsTime Mobile\setup.exe"

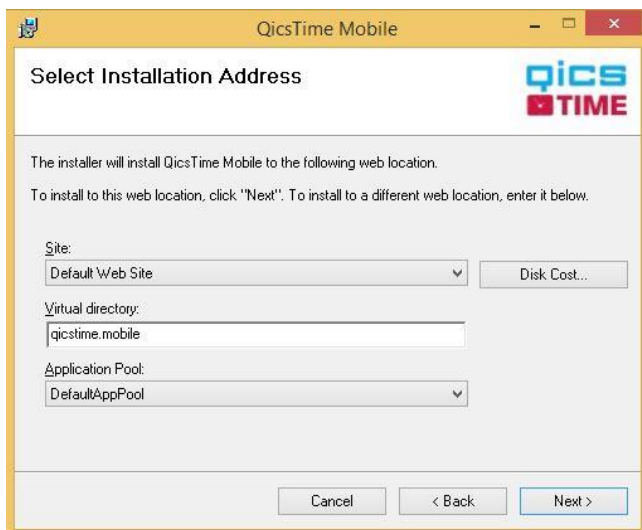
Setup.exe makes sure that next to QicsTime Mobile, other required software is installed as well, like for the .NET framework 4.5.2.

Depending on whether the software is installed or not, a license agreement is shown (see image). There can be more than one. Only after you have accepted all license agreements, the software is going to be installed.

After accepting the agreements (if necessary), the installation-wizard is executed. Follow the instructions as shown.

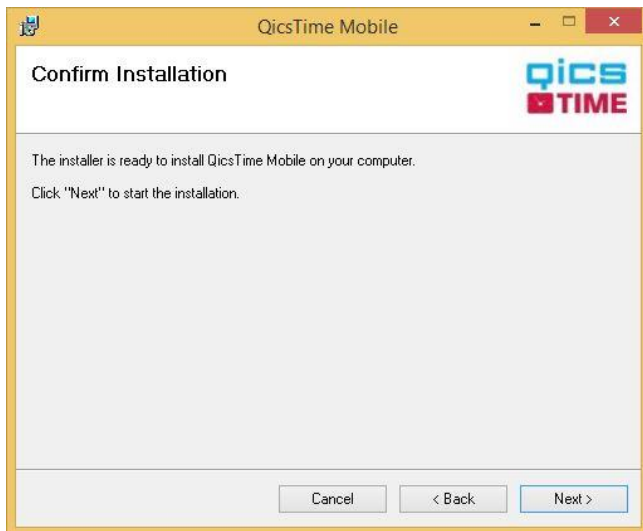


Click the "Next"-button.



Choose the desired Site if you don't want to install under the "Default Web Site". Enter the desired directory name at "Virtual directory". Default is "qicstime.mobile". Choose the correct Application pool that you have created in paragraph 5.2. It should be an Application pool running .Net framework v4.0.

Click the "Next"-button.



Click the "Next"-button to start the installation. Once the installation is finished, click the "Close"-button.

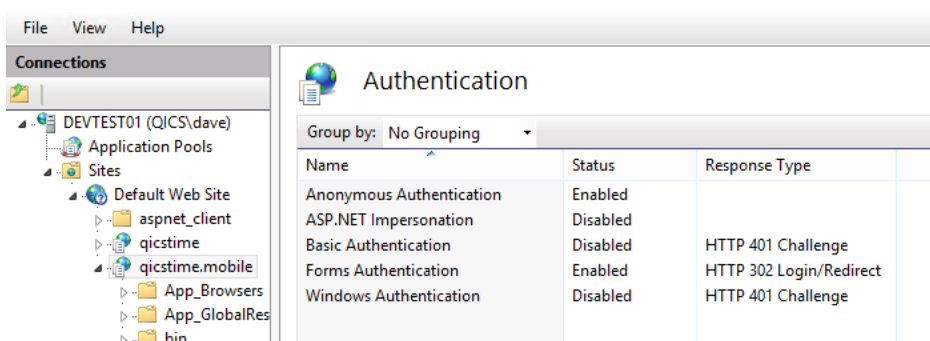
5.4 Internet Information Service (IIS) check

After installation of QicsTime Mobile, we have to make sure that in the "web.config" file from the website the "appSetting" "QicsTimeBaseAddress" has the URL of QicsTime Web.

In case of using all defaults from this document, it should be as shown.

```
<appSettings>
  <add key="aspnet:UseTaskFriendlySynchronizationContext" value="true" />
  <add key="webpages:Version" value="3.0.0.0" />
  <add key="webpages:Enabled" value="false" />
  <add key="PreserveLoginUrl" value="true" />
  <add key="ClientValidationEnabled" value="true" />
  <add key="UnobtrusiveJavaScriptEnabled" value="true" />
  <add key="QicsTimeBaseAddress" value="http://localhost/qicstime" />
</appSettings>
```

On the QicsTime Mobile application the "Authentication" section should be configured as shown.



6. Exact Custom Solutions

6.1 General

There are six possible scenarios for the installation of the SDK Custom solutions.

⇒ Scenario - QicsTime (Standalone)

if you do not own Exact Globe or Exact Synergy or you don't have SDK Custom solutions in your QicsTime license, then you can skip this chapter.

⇒ Scenario 1- Exact Globe (Standalone)

if this scenario applies to your organization, then you can proceed with the paragraph 6.2.

⇒ Scenario 2- Exact Synergy (Standalone)

if this scenario applies to your organization, then you can proceed with the paragraph 6.3.

⇒ Scenario 3- Exact Globe & Synergy – Consolidated

if this scenario applies to your organization, then you can proceed with the paragraph 6.4.

⇒ Scenario 4- Exact Globe & Synergy – Integrated

if this scenario applies to your organization, then you can proceed with the paragraph 6.5.

⇒ Scenario 5 – Exact Synergy Enterprise

if this scenario applies to your organization, then you can proceed with the paragraph 6.6.

In order to complete the instructions of the next paragraphs successfully, somebody needs to log on with enough rights on the Exact Synergy web server and the server which contains the network installation of Exact Globe. These installation procedures have to be repeated after each Exact software update!

The minimum Exact batch is 407.

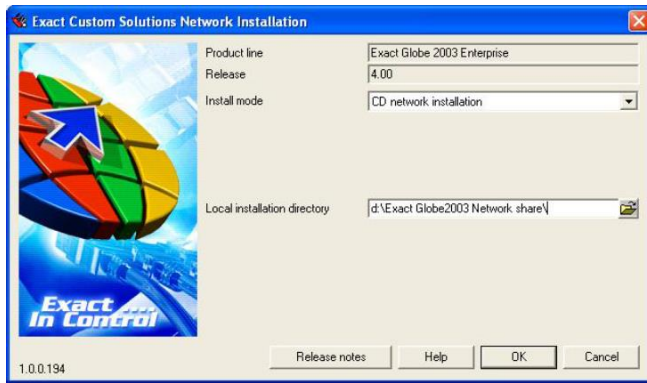
6.2 Scenario 1- Exact Globe (Standalone)

In order to install the right QicsTime SDK Custom solutions, you need to know which Exact Globe batch you use. The CD contains installations for several Exact batches.

If you use Exact batch 408, for instance, you execute this file from CD:

```
"..\Installations\Exact Custom Solutions\Scenario 1- Exact Globe (Standalone)\Batch 407\Exact Globe\CSSetup_AE.exe".
```

The installation wizard is executed and follow the instructions as shown.



Make sure you choose "CD network installation" at "Install mode".
 Enter Exact Globe's network install directory at "Local installation directory".
 Click the "OK"-button.



Exact will check the files that are going to be installed. "Do you want to continue?" Click the "Yes"-button to proceed.

The installation will be completed after this. When Exact Globe is executed on a work station, Exact's software will be checked against the network installation of Exact Globe and the files of the SDK Custom solutions that were just installed.

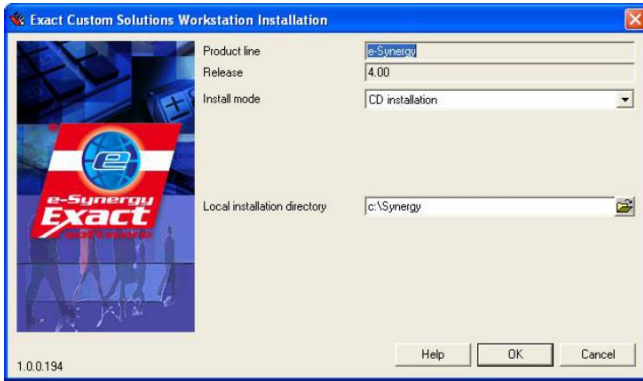
6.3 Scenario 2- Exact Synergy (Standalone)

In order to install the right QicsTime SDK Custom solutions, you need to know which Exact Synergy batch you use. The CD contains installations for several Exact batches.

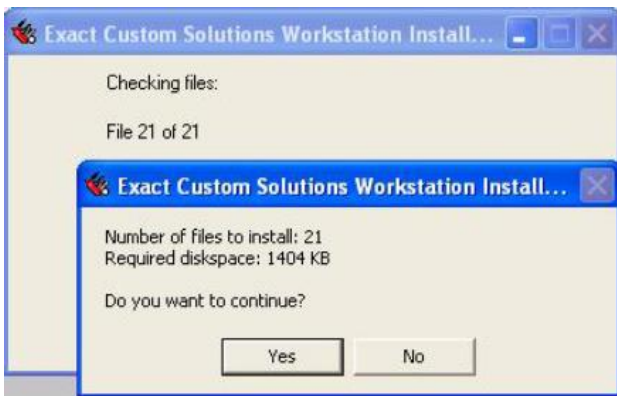
If you use Exact batch 407, for instance, you execute this file from CD:

```
..\Installations\Exact Custom Solutions\Scenario 2- Exact Synergy (Standalone)\Batch 407\Exact Synergy\CSSetup_AE.exe"
```

The installation wizard is executed. Follow the instructions as shown.

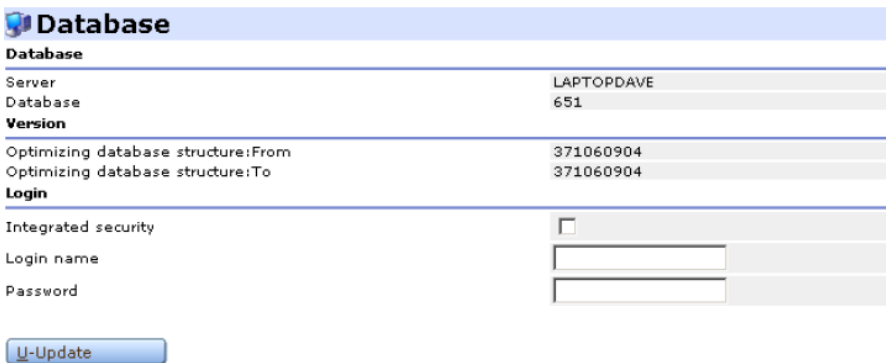


Make sure you select "CD installation" at "Install mode..."
 Enter the Exact Synergy directory at "Local installation directory..."
 Click the "OK"-button.



Exact will check the files that are going to be installed. "Do you want to continue?" Click the "Yes"-button to proceed.

When you start Exact Synergy, Exact's database update procedure is started. These are the same procedures as when you perform a batch update of Exact software.



When the database update is completed, the installation of the Synergy part is finished.

6.4 Scenario 3- Consolidated

In order to install the right QicsTime SDK Custom solutions, you need to know which Exact Synergy batch you use. The CD contains installations for several Exact batches.

For this scenario both Exact Globe and Synergy Custom solutions will have to be installed.

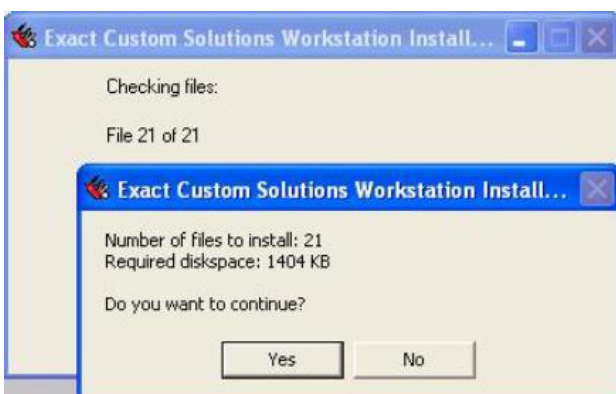
Installation Synergy Custom solutions

If you use Exact batch 407, for instance, you execute this file from CD:
 "..\Installations\Exact Custom Solutions\Scenario 3- Consolidated\Batch 407\Exact Synergy\CSSetup_AE.exe".

The installation wizard is executed. Follow the instructions as shown.



Make sure you select "CD installation" as "Install mode"
 Enter the Exact Synergy directory at "Local installation directory".
 Click the "OK"-button.



Exact will check the files that are going to be installed. "Do you want to continue?" Click the "Yes"-button to proceed.

When you start Exact Synergy, Exact's database update procedure is started. These are the same procedures as when you perform a batch update of Exact software.

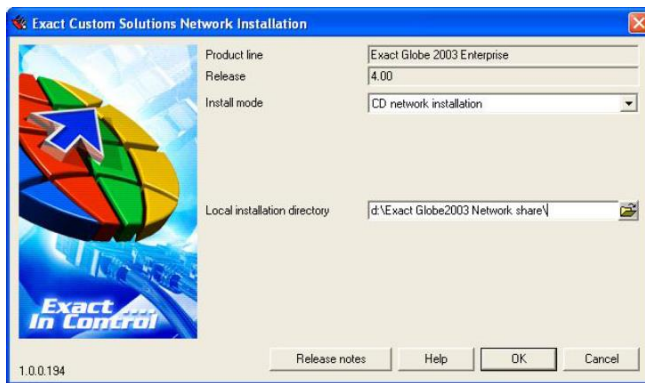
Database	
Server	LAPTOPDAVE
Database	651
Version	
Optimizing database structure:From	371060904
Optimizing database structure:To	371060904
Login	
Integrated security	<input type="checkbox"/>
Login name	<input type="text"/>
Password	<input type="password"/>

When the database update is completed, the installation of the Synergy part is finished.

Installation Globe Custom solutions

If you use Exact batch 407, for instance, you execute this file from CD:
 “..\Installations\Exact Custom Solutions\Scenario 3- Consolidated\Batch 407\Exact
 Globe\CSSetup_AE.exe”.

The installation wizard is executed and follow the instructions as shown.



Make sure you choose “CD network installation” at “Install mode”.
 Enter Exact Globe’s network install directory at “Local installation directory”.
 Click the “OK”-button.



Exact will check the files that are going to be installed. “Do you want to continue?” Click the “Yes”-button to proceed.

The installation will be completed after this. When Exact Globe is executed on a work station, Exact's software will be checked against the network installation of Exact Globe and the files of the SDK Custom solutions that were just installed.

6.5 Scenario 4- Integrated

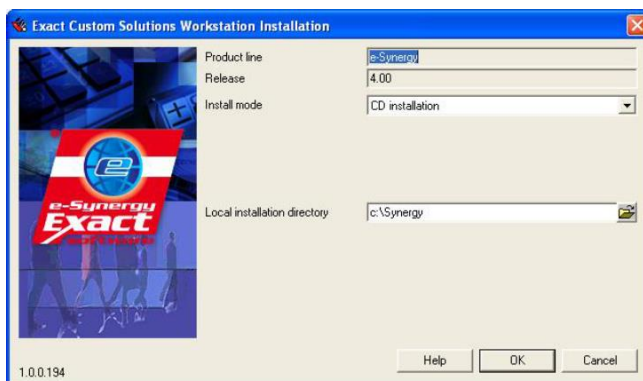
In order to install the right QicsTime SDK Custom solutions, you need to know which Exact Synergy batch you use. The CD contains installations for several Exact batches.

For this scenario both Exact Globe and Synergy Custom solutions will have to be installed.

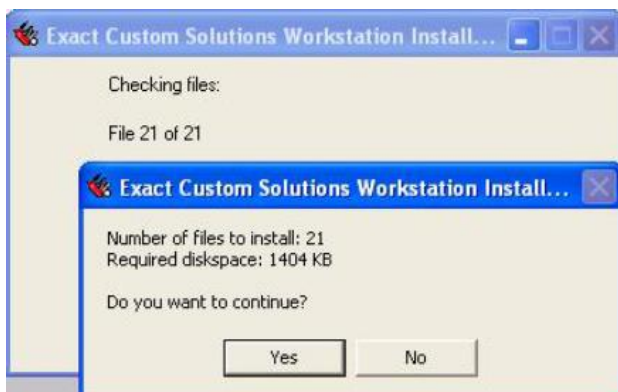
Installation Synergy Custom solutions

If you use Exact batch 407, for instance, you execute this file from CD:
 "..\Installations\Exact Custom Solutions\Scenario 4- Integrated\Batch 407\Exact Synergy\CSSetup_AE.exe".

The installation wizard is executed. Follow the instructions as shown.



Make sure you select "CD installation" as "Install mode"
 Enter the Exact Synergy directory at "Local installation directory".
 Click the "OK"-button.



Exact will check the files that are going to be installed. "Do you want to continue?" Click the "Yes"-button to proceed.

When you start Exact Synergy, Exact's database update procedure is started. These are the same procedures as when you perform a batch update of Exact software.

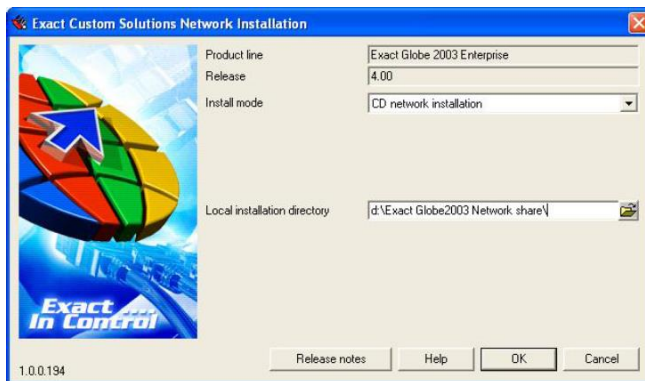
Database	
Server	LAPTOPDAVE
Database	651
Version	
Optimizing database structure:From	371060904
Optimizing database structure:To	371060904
Login	
Integrated security	<input type="checkbox"/>
Login name	<input type="text"/>
Password	<input type="password"/>

When the database update is completed, the installation of the Synergy part is finished.

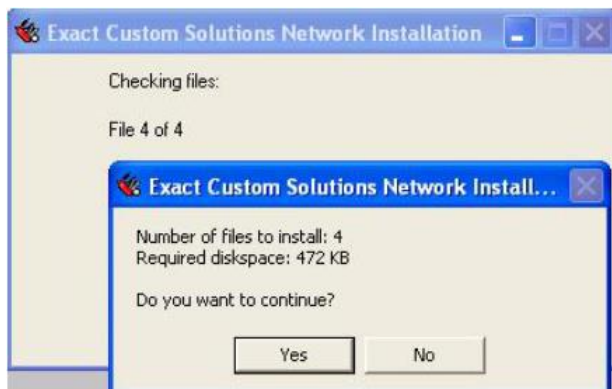
Installation Globe Custom solutions

If you use Exact batch 407, for instance, you execute this file from CD:
 “..\Installations\Exact Custom Solutions\Scenario 3- Integrated\Batch 407\Exact
 Globe\CSSetup_AE.exe”.

The installation wizard is executed and follow the instructions as shown.



Make sure you choose “CD network installation” at “Install mode”.
 Enter Exact Globe’s network install directory at “Local installation directory”.
 Click the “OK”-button.



Exact will check the files that are going to be installed. “Do you want to continue?” Click the “Yes”-button to proceed.

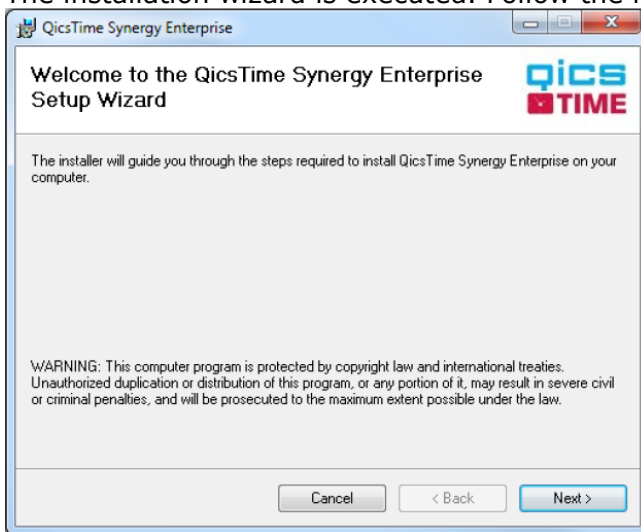
The installation will be completed after this. When Exact Globe is executed on a work station, Exact's software will be checked against the network installation of Exact Globe and the files of the SDK Custom solutions that were just installed.

6.6 Scenario 5- Synergy Enterprise

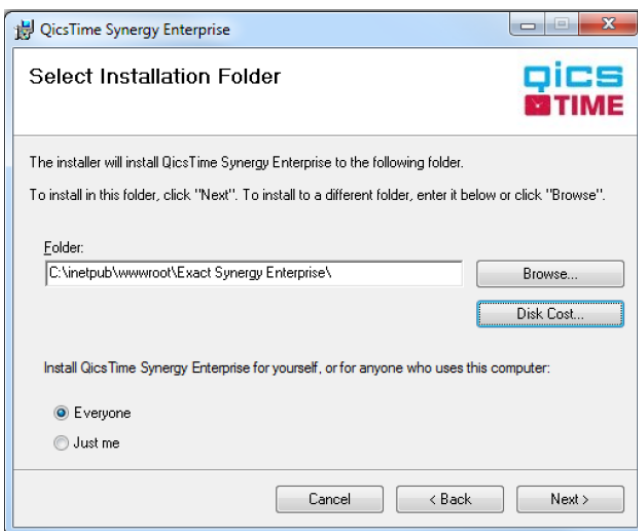
Before you start installing the QicsTime custom solution for Synergy Enterprise make sure the web services are activated. In order to do that choose "setup", "web services" in the "system" menu and check all the available services.

In order to install the right QicsTime Custom solutions execute this file from CD:
 "..\Installations\Exact Custom Solutions\Scenario 5- Synergy Enterprise\Setup.exe"

Note: Use the "setup.exe" not the "Setup.Synergy.Enterprise.msi".
 The installation wizard is executed. Follow the instructions as shown.

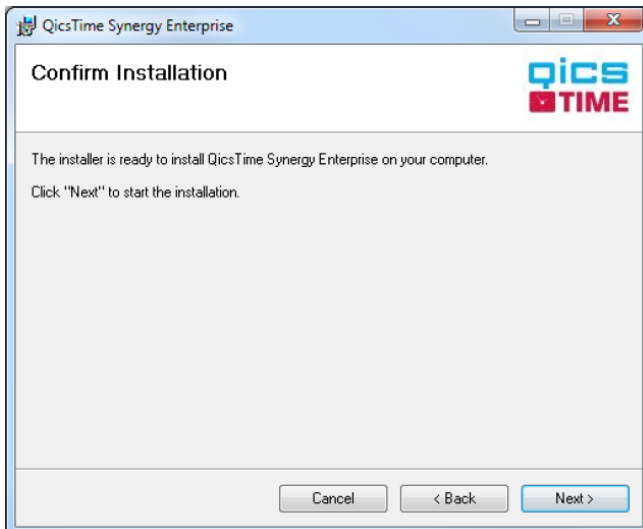


Click the "Next"-button



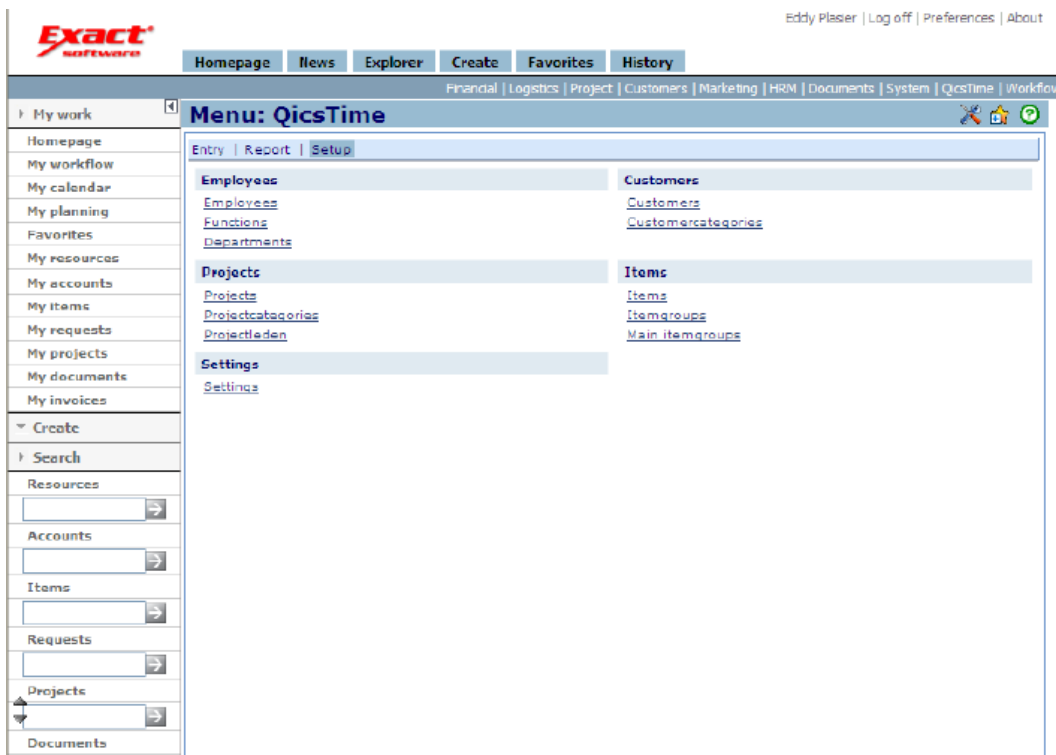
Enter the location where synergy enterprise is installed.

"Install for yourself, or for anyone who uses this computer": Make sure you choose "Everyone". This will avoid problems with synchronization between QicsTime and Synergy Enterprise.

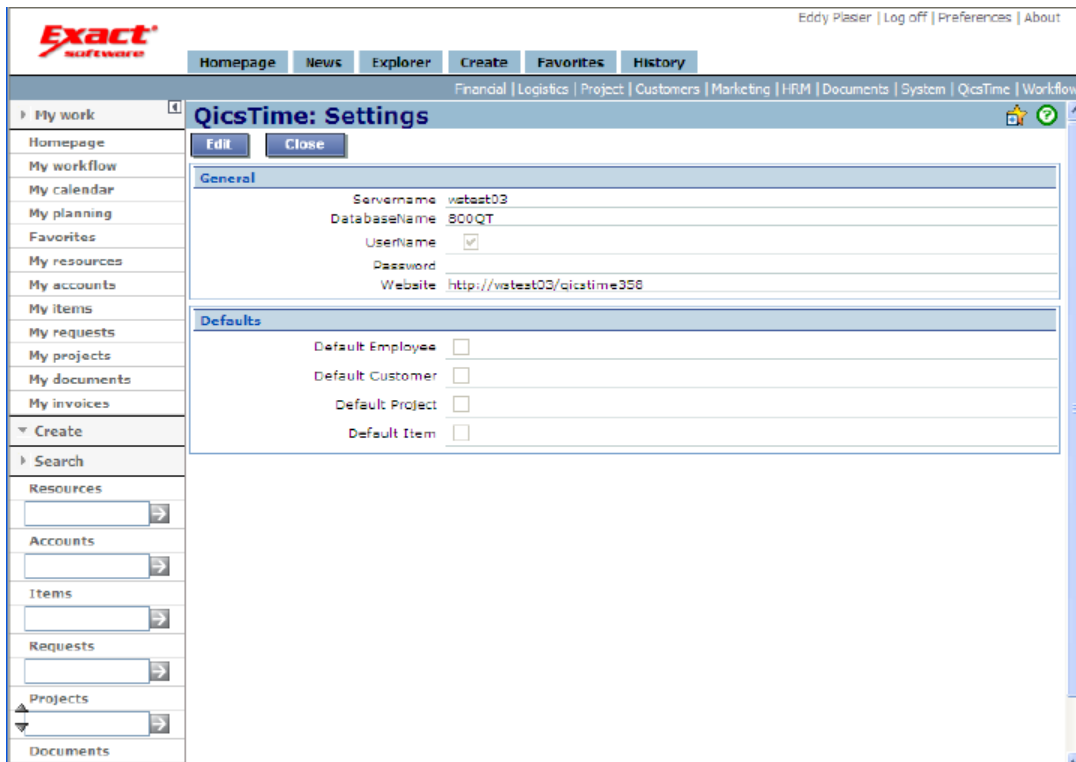


Click the "Next"-button to start the installation. Once the installation is finished, click the close button.

When you start Synergy Enterprise you will find a "QicsTime" link in the top menu.



Choose "settings" in the QicsTime > "Setup" menu.



- Servername: Enter the Server name on which the QicsTime database is installed.
- DatabaseName: Enter the name of the QicsTime database.
- Username: Check the user box.
- Website: Enter the URL of the QicsTime website.

When you entered the correct data, you must be able to open the QicsTime entry screen by choosing "Entry"> "Hour Entry" in the QicsTime menu.

6.7 SDK Add On on one or more specific databases

If you use multiple administrations and you wish to initialize the SDK Add-On on only one or more specific databases, then that requires some mutations in the file "CSSDKCustomSolutions.sql". You will find the file in the Exact e-Synergy and Exact Globe directory you just selected, under the SQL directory.

Open the file in notepad (or equivalent) and search for the following line:
 "INSERT INTO [dbo].[AllowInitQicsTimeOnExactDatabases] (DatabaseName) VALUES (DB_NAME())"

If you want to initialize the SDK Add-On on database "001", change the line above into:
 "INSERT INTO [dbo].[AllowInitQicsTimeOnExactDatabases] (DatabaseName) VALUES ('001')"

Make sure the database name starts and ends with a single quote.

You will need one line for each specific database you want to initialize the SDK Add-On on. For instance database 001 and 002:

```
"INSERT INTO [dbo].[AllowInitQicsTimeOnExactDatabases] (DatabaseName) VALUES ('001')"
```

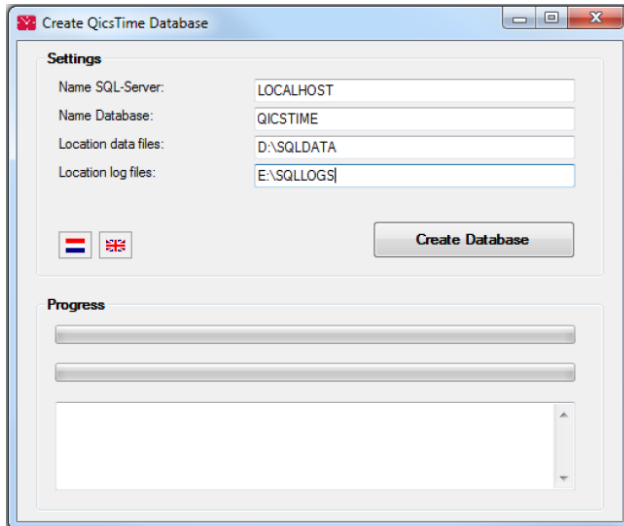
```
"INSERT INTO [dbo].[AllowInitQicsTimeOnExactDatabases] (DatabaseName) VALUES ('002')"
```

7. QicsTime Database

7.1 New

Creating a new database can be done by running "CreateDatabase.exe". You can find this file in the directory you just installed QicsTime Management to.

When you execute the application, you will see the following window.



Enter the name of the SQL server, the name of the database and click "Create Database" to start the creation procedure. Change the location of the database and log files if you want, but make sure the folders are correct.

QicsTime Management and QicsTime Web can be assigned to that database now.

7.2 Update

If you have worked with QicsTime before, then the update will be done by starting QicsTime Management. Before you can use the application, you will be asked to update the database. Click the "Ok"-button and the update procedure will be executed. After these steps the installation is finished and you can continue using the new version of QicsTime.